



Loop-lock UHF tag for identifying, tracking & inventory management of plants.

PHYSICAL SPECIFICATION

Face Stock

Printable white HDPE, resin ribbon is recommended

Label Sizes

175 x 20.32 x 0.5 mm | 6.89" x 0.8" x 0.02"

Adhesive

NA

Delivery Format

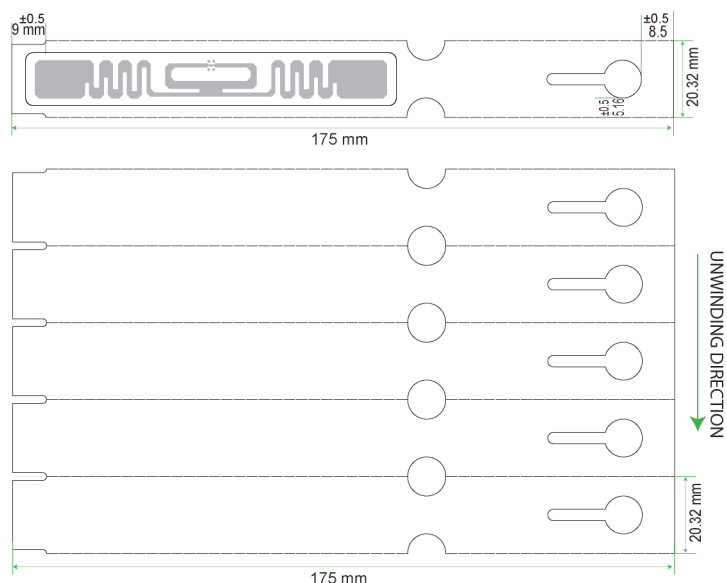
2000 pcs on reel

Label Pitch

19 mm

Core Inner Diameter

76 mm / 3 in



RF SPECIFICATION

Device type

GS1 Class 1 Gen 2 Passive UHF RFID Transponder

Operational frequency

Global 865-928 MHz

IC type*

Impinj M830

Memory configuration

EPC 128bits

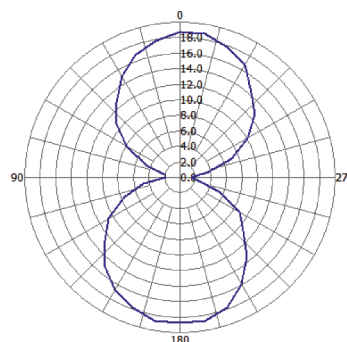
Read range (2W ERP)**

Free Air upto 8 m / 26.24 ft

Applicable Surface Materials

Free Air

RADIATION PATTERN



ENVIRONMENTAL RESISTANCE

Operating Temperature

-50°C to +85°C / -58°F to +185°F

Withstands Exposure To

95% humidity, 60°C x 100 h, 50% humidity, 80°C x 100 h

Peak Temperature

85°C / 185°F

Adhesive Service Temperature

-20°C to +85°C / -4°F to +185°F

Recommended Application Temperature

+10°C to +38°C / 50°F to +100.4°F

Water Resistance

IP68

Chemical Resistance

No physical or performance changes in:

- 168 h Salt water (salinity 10%) exposure
- 168 h Motor oil exposure
- 12 h NaOH (10%) exposure
- 30 min Acetone exposure

Ideal Storage Condition

+23°C / 50% RH

Expected Lifetime

Years in normal operating conditions

PERSONALIZATION OPTIONS

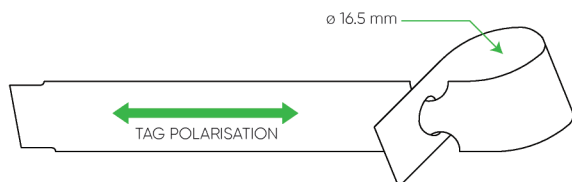
Pre-encoding

Customer specific encoding

Customized Printing

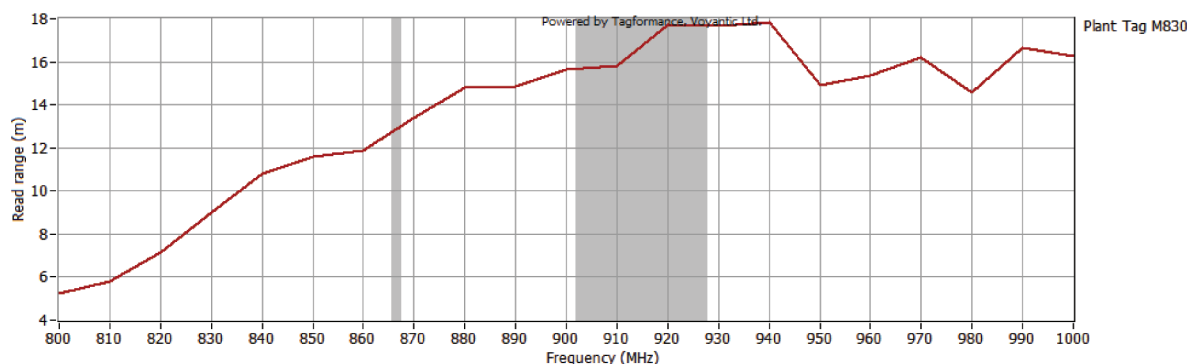
Customer specific artwork including logo & text, numbers, barcodes etc.

PRODUCT INSTALLATION



- Ensure that the branch or stem of the plant does not exceed a diameter of 16.5mm
- Wrap the part of the tag containing the pasted antenna label around the stem/branch and slide it through the "keyhole shaped" gap present on the tag. Slide it until the narrowest portion of the tag gets positioned within the keyhole gap
- Rotate the part protruding from the keyhole gap (part containing the antenna label), by an angle of 90° to ensure self-locking.

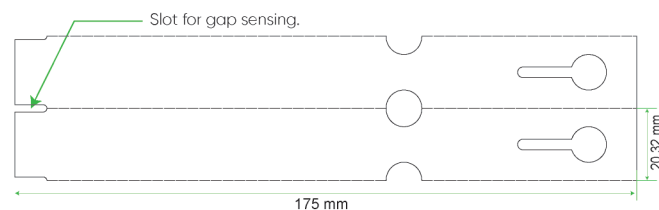
READ RANGE GRAPH



PRINTER COMPATABILITY

Compatible with 6 inch printer only.

Sensor type: Gap sensing.



ORDER INFORMATION

Part Number

RF.PT.17520.M830

Packaging

2000 Tags/Inner; 4 Inner/Outer

* Other IC's available on request

** The indicated read range values are measured in our laboratory testing environment, where antennas with optimum directivity are used with maximum allowed operating power. Different surface materials and environments may exhibit different results.