

FERRO™ ON-METAL LABELS

MoM 6024 GLOBAL



On-metal UHF label with Global Tuning offering extreme performance. Optimised to perform on metal, but works on plastic and liquid containers too. Compatible across leading industrial UHF printer brands.

PHYSICAL SPECIFICATION

Face Stock

Printable white PET, resin ribbon recommended

Label Size

60 x 24 x 1.4 mm | 2.36" x 0.94" x 0.06"

Adhesive

High performance acrylic adhesive with excellent adhesion to all surfaces

Delivery Format

400 pcs on reel

Label Pitch

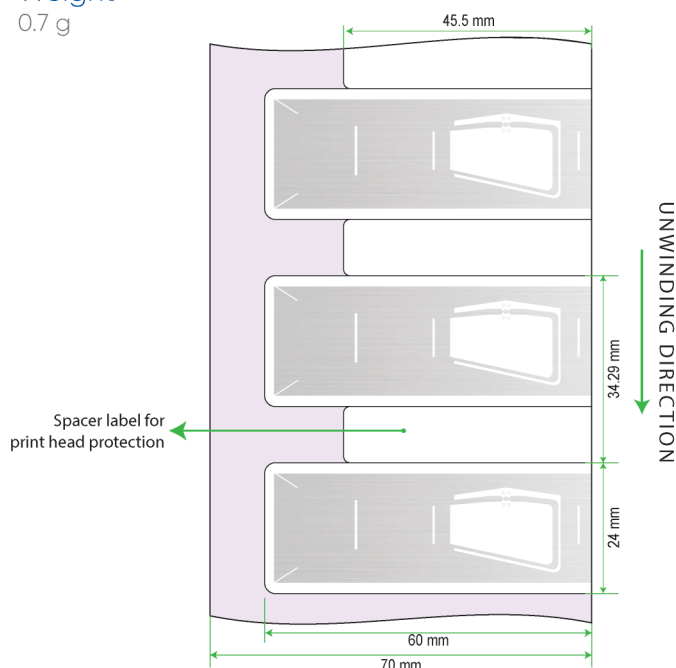
34.29 mm / 1.35"

Core Inner Diameter

76 mm / 3"

Weight

0.7 g



RF SPECIFICATION

Air interface protocol

ISO 18000-6C and EPC global Gen2v2 compliant

Operational frequency

Global 865-928 MHz

IC type*

Impinj M830

Memory configuration

EPC 128bit; TID 96bit

Read range (2W ERP)**

On metal up to 5.5m/ 18ft

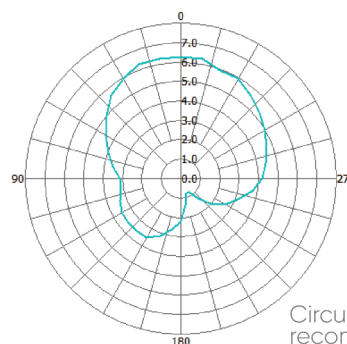
On plastic up to 0.6m/ 1.9ft

On liquid container up to 2.5m/ 8.2ft

Applicable Surface Materials

Optimised for metal but works on other surfaces also

RADIATION PATTERN



Circular polarised antenna recommended

ENVIRONMENTAL RESISTANCE

Operating Temperature

-25°C to +85°C / -13°F to +185°F

Peak Temperature

+100°C for 1 hr, +80°C for 100 hrs

Installation Temperature

+10°C to +38°C / 50°F to +100°F

IP Classification

IP68

Chemical Resistance

No physical or performance changes in:

- 168 h Salt water (salinity 10%) exposure
- 168 h Motor oil exposure
- 12 h NaOH (10%) exposure

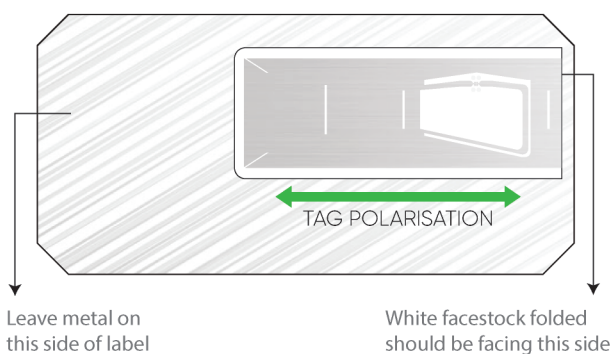
Ideal Storage Condition

+23°C / 50% RH; 1 year

Expected Lifetime

Years in normal operating conditions

PRODUCT INSTALLATION



- Ensure the application surface is even and is clean & dry, to obtain maximum adhesion strength. If required, use approved cleaning solvents to clean surface.
- Avoid touching the background adhesive of the label during installation.
- MoM 6024 can be applied on a curved surface too. Smallest recommended bending diameter is 100mm. For optimal performance bend & apply the label as shown below:



PERSONALISATION OPTIONS

Pre-encoding

- Customer specific encoding of EPC memory

Customised Printing

- Customer specific artwork including logo & text, numbers, barcodes etc.

PRINTER COMPATABILITY

Successfully tested for printing & encoding on the following printers models.

- Zebra ZT411 On-Metal
- SATO CL4 NX Plus
- Printronix T6000e series

For setup instructions and printer configurations contact iotsales@sivagroup.co

For compatability info with other printer models contact iotsales@sivagroup.co

ORDER INFORMATION

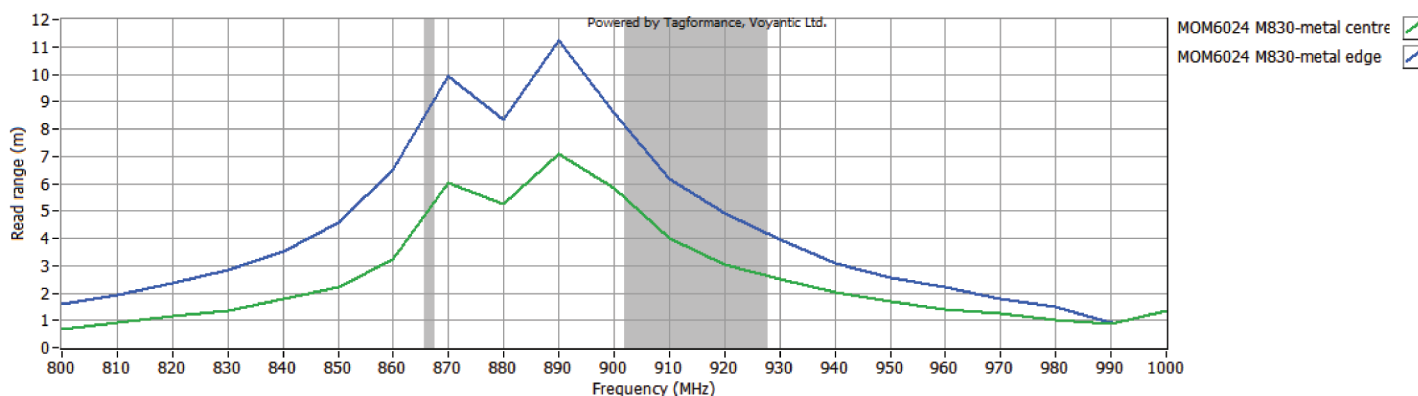
Part Number

RF.LM.6024.M830

Packaging

400 Tags/Roll;
5 Rolls/Cartron

READ RANGE GRAPH



* Other IC's available on request

** The indicated read range values are measured in our laboratory testing environment, where antennas with optimum directivity are used with maximum allowed operating power. Different surface materials and environments may exhibit different results.